

RESEARCH ADVISER

Supporting Australian Researchers

Research Adviser is a cloud technology service that research students, academics, research communities, service providers, projects and programs can use to discover services to support their research.

The vision is to provide the Australian research community:

- Helpdesk services for research communities and service providers
- Discovery and publishing of new services, projects and initiatives
- Dramatically reduced costs in the provision of support services for service providers, virtual laboratories, projects and communities.

Research Adviser is an innovation initiative of AeRO (Australian eResearch Organisations) and CAUDIT (Council of Australian University Directors of Information Technology) to support Australian Researchers.

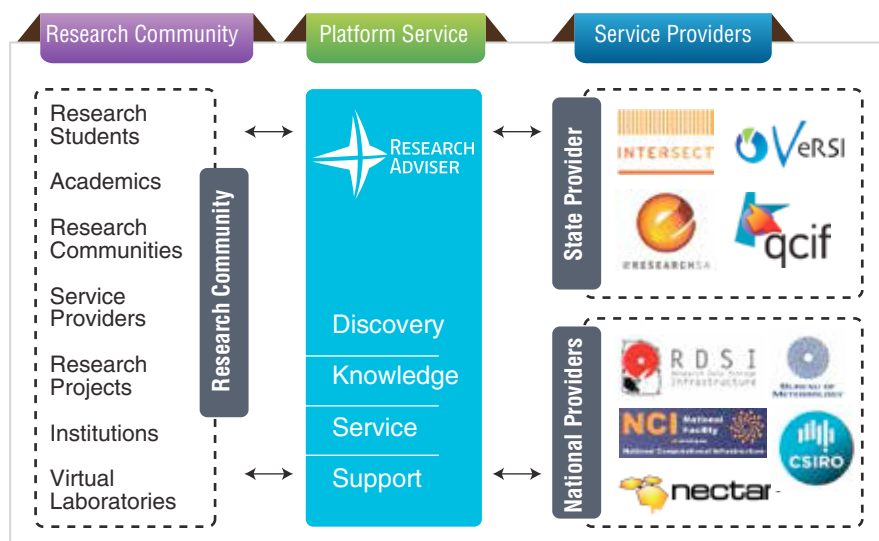
WHY DO WE NEED RESEARCH ADVISER?

- Valuable time is spent trying to search multiple sources to locate discipline, institution or government services and support. To remove costly duplication and fragmentation of research services as a result of national and state providers producing individual service catalogues.
- To streamline the support for research services by providing a national helpdesk.
- Assist researchers by removing the confusion and time spent locating the right tools and services from multiple catalogues.

RESEARCH ADVISER DEMONSTRATOR

- It might be a research project, a tool, a data storage service, a virtual laboratory (VL) or a collaboration service; Research Adviser can help. Please visit the Research Adviser Demonstrator: <https://researchadviser.gov.service-now.com/ess>

HOW WILL IT WORK?



BENEFITS

Researchers

- Ability to discover, comment, rate and make recommendations on services.
- Be part of a user community that collectively defines the quality of services to help inform future developments and individuals' choices.

Research Providers

- A sector-wide service for support and the listing of research services, eliminating the need for each service provider to develop its own support platform and service catalogue.
- Each service provider has control over the branding of its portal and over which services it wishes to display to their research communities.
- Easy access and workflow provided through AAF authentication.
- Service providers, research students, academics, national projects, government, and research institutions have an established vehicle through which to communicate and promote their research.
- Facilitates collaboration and the sharing of expensive support resources, while reducing service provider overheads and operational costs in the establishment of support services.
- Provides a national forum for the discovery of services from providers like CSIRO, Bureau of Meteorology, NeCTAR and RDSI Nodes, NCI and State eResearch organisations.

Who can I contact for more information?

Richard Northam
Chief Executive Officer, CAUDIT
richard.northam@caudit.edu.au

Heath Cooper
The University of Sydney IT Manager, Capability Solutions
heath.cooper@sydney.edu.au

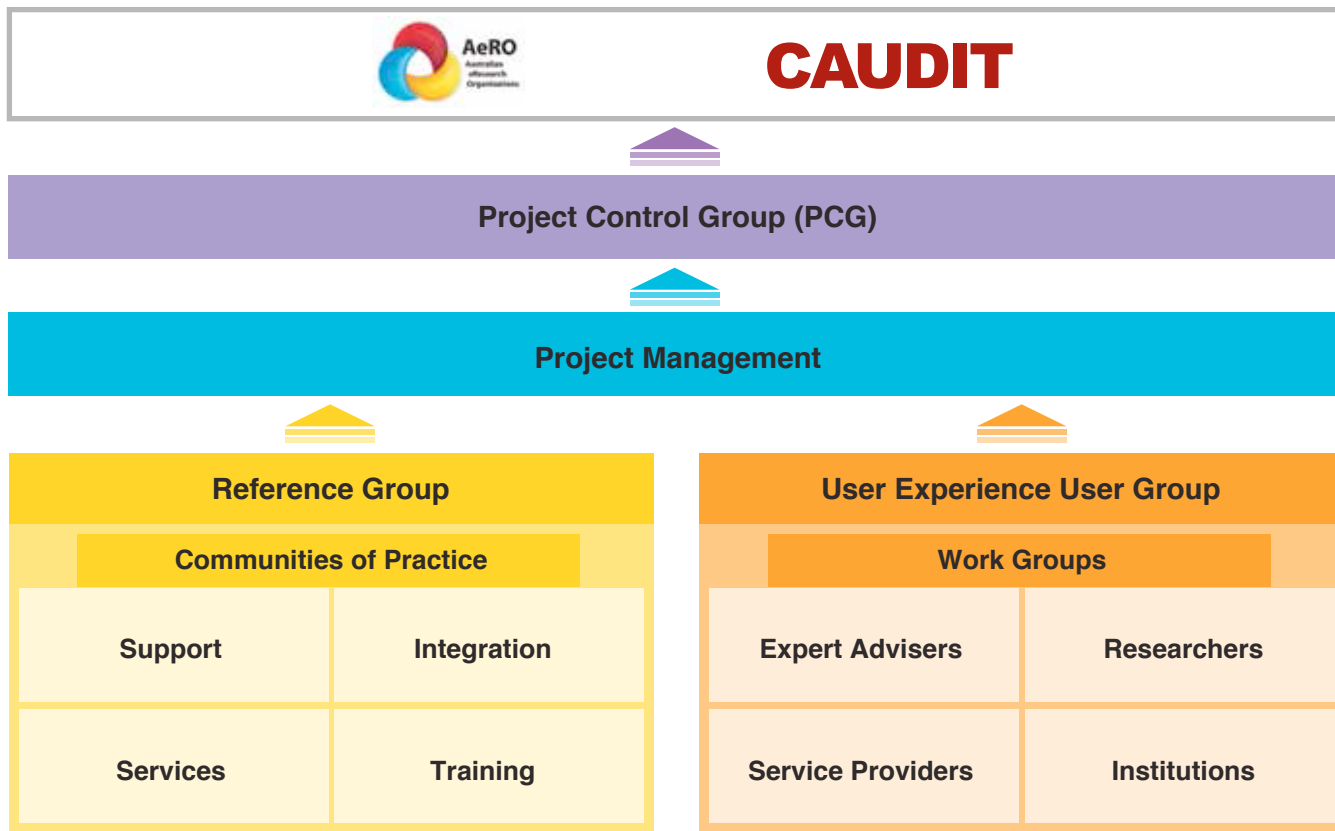
Patricia McMillan
CAUDIT Director for Strategic Initiatives & Member Services
patricia.mcmillan@caudit.edu.au

Steve Manos
The University of Melbourne IT Manager
smanos@unimelb.edu.au

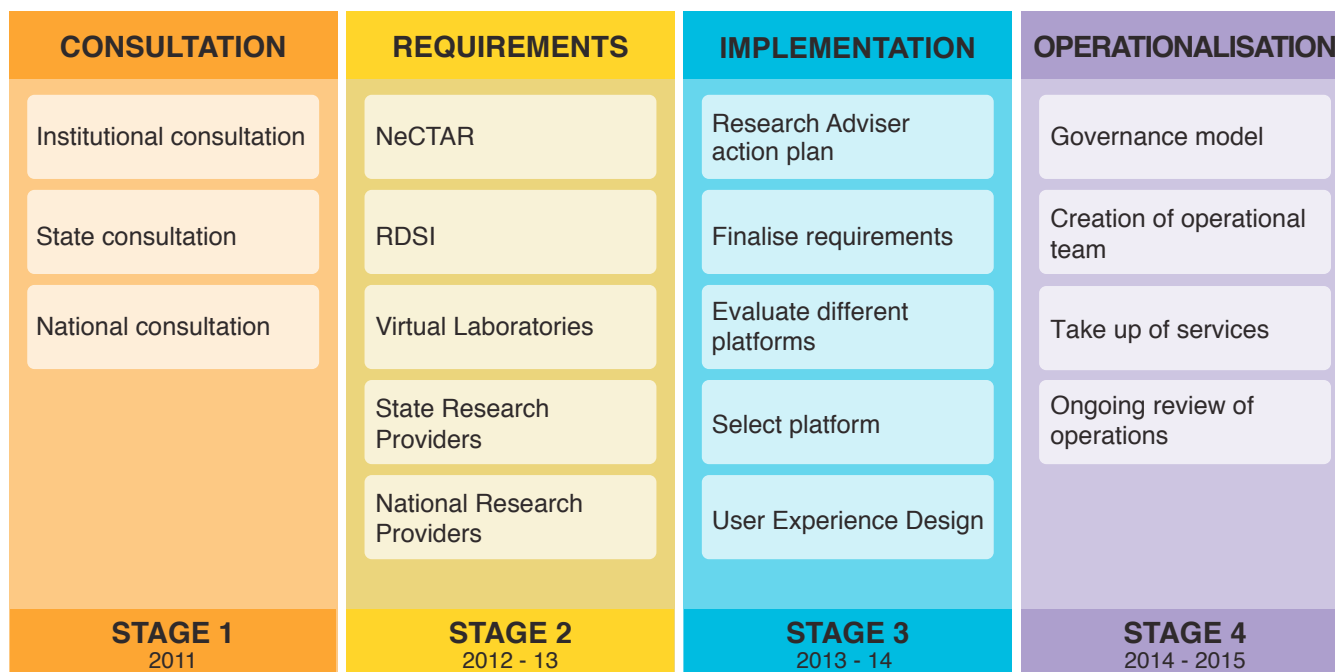


CAUDIT

GOVERNANCE MODEL



RESEARCH ADVISER APPROACH



USER SUPPORT PROJECT MAIN OBJECTIVES

